

# CANNON®

*Save money...*

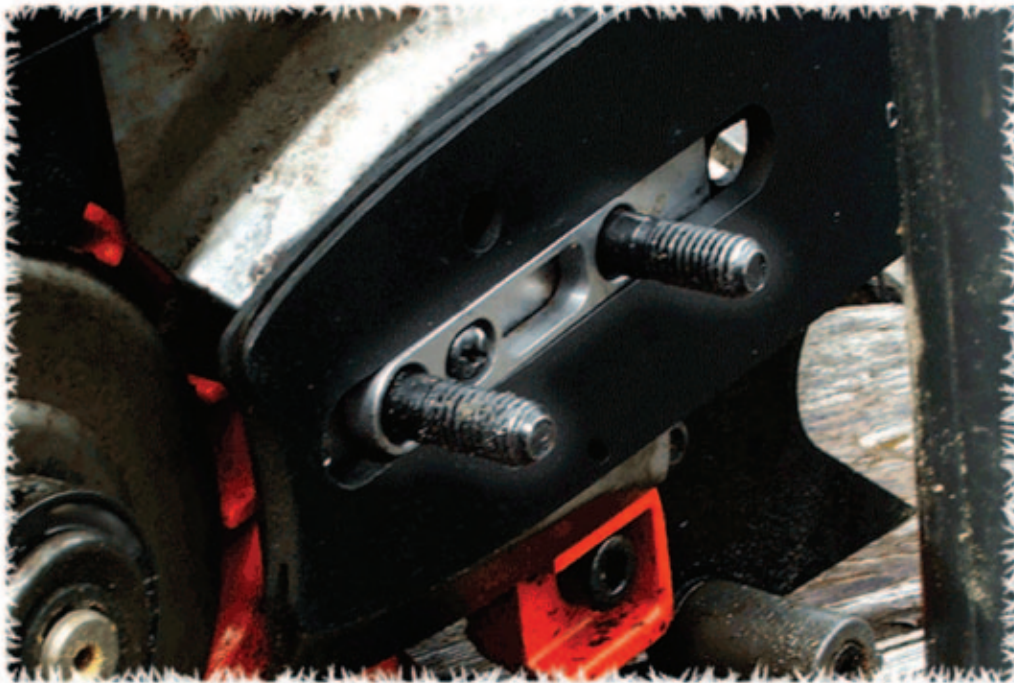


*Use the same bar on two different saws!*



## **Cannon Bar Adaptor Plate**

These handy adaptors allow the operator to **use a Stihl® mount bar on a Husqvarna® chainsaw** (converting the 12mm slot for use on the 9mm stud)



**The adaptor fits snugly in the bar slot, and the plate screw secures it to the saw.**

**Toll free: 1-888-604-9990    WWW.CANNONBAR.COM**