

CANNON® Adaptor Plates

These handy adaptors allow the operator to use the same bar on many different saw makes

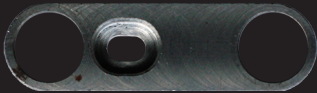
Dealers need only stock one bar mount to service most popular saws

The adaptor fits snugly in the bar slot and for most saws, the plate screw secures it to the saw (with the exception of CBW-20040, CBW20090, CBW-20095)



CBW-20040

S1 to C1 Stihl 12 mm bar mount to Echo 8 mm bar mount
36 mm center to center bar studs
Fits Echo CS-450/P, CS 490, CS-500P, CS-530, CS550-P



CBW-20060

S1 to H1 Stihl 12 mm bar mount to Husqvarna 9 mm bar mount
30 mm center to center bar studs
Also fits most Dolmar/Makita 9 mm mount saws



CBW-20020

S1 to H1 Stihl 12 mm bar mount to Husqvarna 9 mm bar mount
38 mm center to center bar studs
Fits Husqvarna 562XP



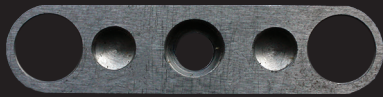
CBW-20030

S1 to H1 Stihl 12 mm bar mount to Husqvarna 9 mm bar mount
44 mm center to center bar studs
Fits most Husqvarna 9 mm mount saws



CBW-20090

S1 to H1 Stihl 12 mm bar mount to Husqvarna 9 mm bar mount
46 mm center to center bar studs
Fits Husqvarna 3120



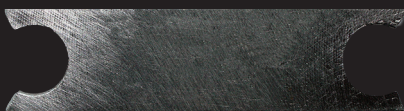
CBW-20050

S1 to P4 Stihl 12 mm bar mount to Echo 8 mm bar mount
40 mm center to center bar studs
Fits most Echo saws



CBW-20035

G1 to H1 Stihl 14 mm bar mount to Husqvarna 9 mm bar mount
44 mm center to center bar studs
Fits most Husqvarna 9 mm mount saws * For Milling Bars only



CBW-20095

G1 to H1 Stihl 14 mm bar mount to Husqvarna 9 mm bar mount
46 mm center to center bar studs
Fits Husqvarna 3120 * For Milling Bars only



CBW-20080

G1 to S1 Stihl 14 mm bar mount to Stihl 12 mm bar mount
35 mm center to center bar studs
Fits all Stihl 12 mm mount saws * For Milling Bars only

*** All G1 Mount Adaptor Plates are meant for use on Double Ended Milling Bars which require an Auxiliary Oiler Kit and Helper Handle with Roller, unless used with two powerheads**

www.cannonbar.com