



"The Best Bar - Bar None!" ®

www.cannonbar.com

toll free: 1-888-604-9990

CANNON• SUPERBAR NUMBERING SYSTEM

<div> <div>CSB</div> <div>-</div> <div>C1</div> <div>-</div> <div>12</div> <div>-</div> <div>50</div> <div>-</div> <div>2</div> </div>				
<div> <div>↙</div> <div>↓</div> <div>↓</div> <div>↓</div> <div>↘</div> </div>				
TYPE CODE	* MOUNT CODE	LENGTH CODE	GAUGE CODE	PITCH CODE
CSB	C1	12"	50 = .050	2 = .325"
	H1	15"	58 = .058	3 = 3/8"
	P4	16"	63 = .063	4 = .404"
	S1	17"		H =
	S2	18"		replaceable
		20"		hard nose
		21"		
		22"		
		24"		
		25"		
		26"		
		28"		
		29"		
		30"		
		32"		
		33"		
		34"		
		36"		
		37"		
		41"		
		42"		
		50"		
		60"		
		72"		
		84"		

* Refer to **CANNON• Motor Mount Crossover Guide**

SUPERBARS

Professional Heavy Duty Falling and Bucking Bars



Classic solid steel bar with flame hardened rails and precision honed groove

Power plus profile maximizes cutting power and chain speed while reducing damage from loose chain

Large Venturi Oil Hole increases lubrication for longer bar and chain life and reduces oil hole plugging

Available in lengths from 12" to 84"

Motor mounts available for most makes and models of chainsaws

Available in .325", 3/8" or .404" pitch

Replaceable single rivet sprocket nose; replaceable hard nose also available

Available in .050, .058 and .063 gauge

SUPERBAR DURALITE

Reduced Weight Professional Heavy Duty Falling and Bucking Bars



Durability of the SuperBar in a Lighter Weight version

Available in S1 mount (12.1mm bar studs); use Cannon Adaptor Plates to fit to other makes of chainsaws

Available in 24", 28", 32" and 36" lengths

MOTOR MOUNT CROSS OVER NUMBERS

CANNON	OREGON	CANNON	OREGON
SuperBar (CSB)		Double Ended Milling (CDE)	
C1	A041 / K041 A061 / A064 A074	G1	-
H1	D009	LM	-
P4	D176	LM1	-
S1	D025	PM	-
S2	D033 / E031 E086 / E099	Package Cutting (CPB)	
SuperMini (CSM)		E1	9136 / 136
C1	A041 / K041 A061 / A064 A074	E2	9137 / 137
H1	D009	HT	-
H5	A095 / K095	PU	-
H6	A095 / K095	RT	-
S1	D025	Harvester / Slashing (CHV, CHA, CSL)	
S5	A074	A1	L104 / L114
Pruning (CPP)		A5	T146
C1	A041 / K041 A061 / A064	E1	9136 / 136
H1	D009	E2	9137 / 137
H8	A318	E4	9155
P5	A041	E5	9191
S1	D025	E9	-
Firewood Processing (CBB, CBV)		E10	-
B1	-	F1	B149
B2	-	F2	L149
B4	-	F4	L163
Rescue (CFB, CRS)		F8	T227
H1	D009	F9	T229
P4	D176	HT	-
S1	D025	J1	T222
		J3	-
		K5	T043 SN / T043 AT
		K7	T138
		K8	K205
		K9	C159
		L4	9135 / 135 / T135
		N1	N104 / N114
		N3	T190
		N5	T210
		N7	T219
		N9	T223
		Q6	T161
		SP	-
		ST	-

SUPERMINI BARS

Specifically designed for Narrow Kerf Chain
used on small saws less than 65 cc



Narrow profile for high maneuverability, 1.75" tip diameter

Ideal for log home builders, carvers and tree service professionals

Available in lengths from 12" to 32"

Motor mounts available for most makes and models of chainsaws

Available in .325" pitch and 3/8" low profile

Available in .050 and .058 gauge

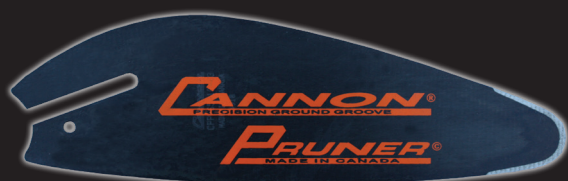
Replaceable sprocket tip

CANNON® SUPERMINI + PRUNING NUMBERING SYSTEM

<div> <div>CSM</div> <div>-</div> <div>C1</div> <div>-</div> <div>16</div> <div>-</div> <div>50</div> <div>-</div> <div>2</div> </div>				
TYPE CODE	* MOUNT CODE	LENGTH CODE	GAUGE CODE	PITCH CODE
CSM CPP	C1 H1 H5 H6 H8 P5 S1 S5	10" 12" 13" 14" 15" 16" 18" 20" 24" 28" 32"	50 = .050 58 = .058 43 = .043 * * CPP only	2 = .325" 3LM = .370" Low Profile

PRUNING / ARBORIST BARS

Uniquely designed for powered pole pruners
used for pruning fruit, nut and ornamental trees



Unique design helps to eliminate bark damage

Available in 10" and 12" lengths

Available for most popular pole pruning saws

Available in .050 and .043 gauge

www.cannonbar.com

MOUNTING BARS

Drive Chain Guide Bars for Log Wizards
and Other Chainsaw Driven Attachments



Available in 12" and 24" lengths

Available in C1, H1 and S1 motor mounts

Available in .050, .058 and .063 gauge

CARPENTER

Pro User Carpentry Bar for plunge cuts, level cuts and miter cuts
Uniquely designed with a very narrow profile and parallel rails



Ideally suited for timber and log construction

Parallel rails allow for a straight bottom cut, making finishing
and joining easier and more accurate

The narrow profile can be used for making curved cuts

Available in 20", 24" and 28" lengths

C1, H1 and S1 mounts

3/8" pitch, .050 gauge

3/8" low profile, .050 gauge

FIREWOOD PROCESSING BARS

Hard Nose and Sprocket Nose Bars for
Automated Firewood Processing Machines



Solid steel bar with flame hardened rails and
precision honed groove for maximum durability

Available lengths from 16" to 55"

Available in .325", 3/8" and .404" pitch sprocket nose
or hard nose versions

Available in .050, .058, .063 and .080 gauge

RESCUE BARS

Bars for Venting and Rescue Saws

Available in lengths of 16" and 20"

Available for many brands of Rescue Saws, including Stihl,
Cutter's Edge, Team, and others

3/8" pitch and 404" pitch / .058 and .063 gauge

Replaceable sprocket nose

Replaceable hardnose also available



CARVING BARS

For applications from wood carving to log home building
Small Nose Cobalt tipped bars for carving and fine detail cutting



ARBOR TIP

Carving tips are reinforced with a custom cobalt alloy providing even more endurance

TOONIE TIP

Available in lengths from 8" to 28"

QUARTER TIP

Available in C1, H1 and S1 mounts
Dime tip available in C1 mount only

DIME TIP

Available in .050 and .043 gauge

CANNON CARVING BAR NUMBERING SYSTEM

<div> <div>CCD</div> <div>-</div> <div>C1</div> <div>-</div> <div>8</div> <div>-</div> <div>43</div> </div>				
TYPE CODE	* MOUNT CODE	LENGTH CODE	GAUGE CODE	PITCH CODE
CCA	C1	8"	43 = .043	N / A
CCT	H1	12"	50 = .050	
CCQ	S1	14"		
CCD		16"		
		18"		
		20"		
		24"		
		28"		

COMPETITION

Hotsaw Fat Belly Racing Bars
"The racing bar of champions"



Standard and hotsaw mounts available; custom mounts crafted to order

Available with 2.8" roller nose

Many lengths available, or custom made to your needs

Available in standard .063 gauge; .050 and .058 upon request

Available in 3/8" and .404" pitch

Cobalt inlay at nose and tail for extreme racing conditions

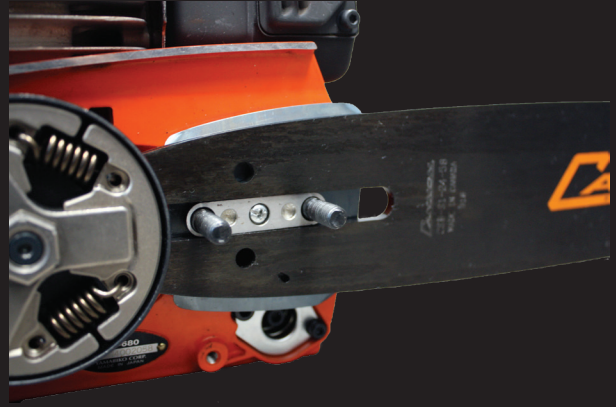
www.cannonbar.com

CANNON® Adaptor Plates

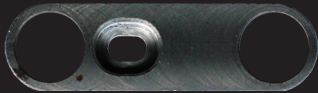
These handy adaptors allow the operator to use the same bar on many different saw makes

Dealers need only stock one bar mount to service most popular saws

The adaptor fits snugly in the bar slot and for most saws, the plate screw secures it to the saw (with the exception of CBW-20040, CBW-20090, CBW-20095)



CBW-20040 **S1 to C1** Stihl 12.1 mm bar mount to Echo 8 mm bar mount
36 mm center to center bar studs
Fits Echo CS-450/P, CS 490, CS-500P, CS-530, CS550-P



CBW-20060 **S1 to H1** Stihl 12.1 mm bar mount to Husqvarna 9 mm bar mount
30 mm center to center bar studs
Also fits most Dolmar/Makita 9 mm mount saws



CBW-20020 **S1 to H1** Stihl 12.1 mm bar mount to Husqvarna 9 mm bar mount
38 mm center to center bar studs
Fits Husqvarna 562XP



CBW-20030 **S1 to H1** Stihl 12.1 mm bar mount to Husqvarna 9 mm bar mount
44 mm center to center bar studs
Fits most Husqvarna 9 mm mount saws



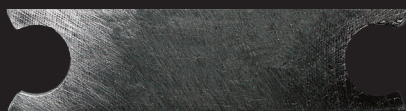
CBW-20090 **S1 to H1** Stihl 12.1 mm bar mount to Husqvarna 9 mm bar mount
46 mm center to center bar studs
Fits Husqvarna 3120



CBW-20050 **S1 to P4** Stihl 12.1 mm bar mount to Echo 8 mm bar mount
40 mm center to center bar studs
Fits most Echo saws



CBW-20035 **G1 to H1** Stihl 14 mm bar mount to Husqvarna 9 mm bar mount
44 mm center to center bar studs
Fits most Husqvarna 9 mm mount saws * For Milling Bars only



CBW-20095 **G1 to H1** Stihl 14 mm bar mount to Husqvarna 9 mm bar mount
46 mm center to center bar studs
Fits Husqvarna 3120 * For Milling Bars only



CBW-20080 **G1 to S1** Stihl 14 mm bar mount to Stihl 12 mm bar mount
35 mm center to center bar studs
Fits all Stihl 12 mm mount saws * For Milling Bars only

*** All G1 Mount Adaptor Plates are meant for use on Double Ended Milling Bars which require an Auxiliary Oiler Kit and Helper Handle with Roller, unless used with two powerheads**

www.cannonbar.com

DOUBLE ENDED MILLING BARS

Double ended bars for
Chainsaw Powered Lumber Mills



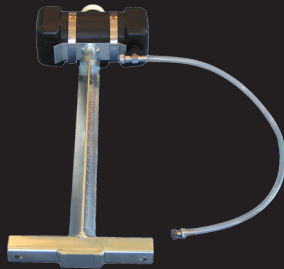
Can be used with two powerheads or one powerhead with a helper handle (sold separately)

Available in lengths from 44" to 144"

Universal G1 motor mount fits most common large saws

Available in standard .063 gauge; .050 and .058 upon request

Adaptors supplied to accommodate different bar stud sizes



OILER KIT



HELPER HANDLE

PACKAGE CUTTING BARS

Double Ended Bars for Packaging and Bundle Cutting Saws
such as L-M and Holtec



Used on packaging and bundle cutting saws by shake and shingle, pallet and fencing companies

Available in lengths of 60" to 108"

.404" pitch / .063 gauge; .404" pitch / .080 gauge; 3/4" pitch / .122 gauge

The .063 and .080 bars feature flame hardened rails; can be rebuilt up to six times at a fraction of the cost of a new bar

CANNON HARVESTER NUMBERING SYSTEM

CHA - A1 - 29 - 80 - 4					
TYPE CODE	* MOUNT CODE	LENGTH CODE		GAUGE CODE	PITCH CODE
CHA	A1	21"	54 cm	63 = .063 80 = .080	4 = .404"
	N1	23"	59 cm		
	F1	25"	64 cm		
	F2	27"	68 cm		
	F4	28"	71 cm		
		29"	75 cm		
		31"	80 cm		
		32"	82 cm		
		36"	90 cm		
		39"	100 cm		
CHV	A5	28"		12 = .122	5 = .750"
	F8	30"			
	F9	32"			
	J1	34"			
	J3	35"			
	K5	36"			
	K7	38"			
	K8	40"			
	K9	41"			
	N3	43"			
	N5	45"			
	N7	55"			
	N9				
Q6					
CSL	E1	44"		118 = .118 12 = .122	N/A
	E2	51"			
	E4	57"			
	E5	58"			
	E9	59"			
	E10	60"			
	HT	64"			
	L4	65"			
	SP	72"			
	ST	84"			
		96"			

* Refer to **CANNON Motor Mount Crossover Guide**

HARVESTER 750

For Mechanized Log Harvesting and Processing



Made from special titanium material for durability and wear resistance, that work hardens with use

Work hardening penetrates deep to allow for several rebuilds

Available in lengths from 28" to 72"

Motor mounts available for a variety of common harvesting heads

3/4" pitch, .122 gauge

Replaceable sprocket nose

HARVESTER 404

For Mechanized Log Harvesting and Processing



Power plus profile maximizes cutting power and chain speed while reducing damage from loose chain

Available in lengths from 21" to 46"

Motor mounts available for a variety of common harvesting heads

.404" pitch, .080 gauge

Replaceable sprocket nose

SLASHING BARS

Double Ended Bars for Mechanized Cutting



Precision honed and centered grooves facilitate the chain riding square to the rail, resulting in smoother and straighter cutting

Available in lengths from 44" to 96"

Motor mounts available for a variety of slasher heads

3/4" pitch, .118 gauge and .122 gauge

www.cannonbar.com

What Makes **CANNON®** *"The Best Bar - Bar None!"®*

All *Cannon Bars* are made from high grade, custom formulated, cold rolled and annealed steel, that has extra chromium for wear resistance and extra molybdenum for strength.

"The Best Bar - Bar None!"® NEEDS THE BEST STEEL TO MAKE IT LAST

From the raw steel, each bar is precisely **WATER JET CUT**, so that there are no Heat Affected Zones (HAZ).

Once the steel is cut, it is **HEAT TREATED**, oil quenched and press tempered to achieve just the right hardness for strength, durability, toughness and flexibility.

The hardened bars are carefully **STRAIGHTENED** and **SURFACE GROUND** to the ideal thickness.

Next, surface ground bars are **CNC MILLED**, leaving little margin for error. Different milling patterns are cut, depending on the style of tip that the bar is fitted with.

Once a bar is milled, it is put into the hands of our **MASTER BARMEN**, who give it Cannon's claim to fame, the **PRECISION HONED GROOVE**. Every bar has a true and centered groove that is accurate to within .003" of the desired gauge. It is this care, attention and skilled workmanship that really makes our bars stand out against the competition.

Next is the rail hardening. Using a proprietary **FLAME HARDENING PROCESS**, the bar rails are hardened to 5 points more than the tie straps on most models and brands of chain. This special hardening process penetrates much deeper than electric induction hardening and results in much longer bar rail life.

Longer bars are then **HEEL PRESSED** in order to reduce vibration and prevent premature cracking from vibration.

The bars are put through a **STRESS RELIEVING SYSTEM** in order to expel tension that builds up in the bars through all of the different processes. This step realigns the molecular structure to ensure that the bars will not be stressed and prone to premature cracking.

Finally the bars are ready for the finishing touches. Cannon applies the attractive brushed **GUNMETAL FINISH** to most of the bars. Some longer lengths and specialty bars still have Cannon's classic matte black painted finish. The bars are engraved with our identifying numbers and silk screened with our logo. They are now ready to be tipped, put through our **FINAL QUALITY ASSURANCE TESTS**, packaged and shipped to the customer.

There you have it, all the steps taken to ensure you are **GETTING...**

"The Best Bar - Bar None!"®

LIFETIME WARRANTY

Cannon Bar Works Ltd. warrants its products to be free from defects in material or workmanship for as long as they are owned by the original end use purchaser. Cannon chainsaw bars are not warranted against improper maintenance or user abuse, including but not limited to, damage caused by improperly tensioned chain and normal metal fatigue. This warranty is limited to repair or replacement of the product, solely at the discretion of CannonBar Works Ltd. and specifically excludes compensation for consequential or indirect damages of any kind whatsoever.

www.cannonbar.com

1-888-604-9990
Cannon Bar Works Ltd.
5525 - 272nd Street, Unit A120
Langley, BC V4W 1P1 Canada

info@cannonbar.com

Copyright 2020 Cannon Bar Works Ltd.
E & OE